

Rozelle Interchange

WestConnex



Rozelle, Lilyfield, Annandale and Iron Cove

Monthly update | April 2020



This monthly update provides an overview of construction work planned for April 2020 across the Project including information on new and ongoing activities. Contents of this update include:

- **changes to connectivity at Iron Cove** – page 2
- **Iron Cove** - (north of Darling Street to the Iron Cove Bridge) - pages 3 & 4
- **Rozelle and Lilyfield** - (south of Darling Street to City West Link and Victoria Road up to the ANZAC Bridge) - pages 5, 6 & 7
- **Annandale** - (James Craig Road, City West Link and The Crescent to Johnston Street) – pages 8 & 9
- **ongoing activities across all sites in April (day and night)** – page 10
- **tunnelling update** – page 10

Looking ahead: Key noisy night work activities planned across all areas over the next three months

Rozelle, Lilyfield and Annandale (Victoria Road and the Western Distributor, City West Link, The Crescent, James Craig Road, Johnston Street and Chapman Road):

- utilities and drainage work (trenching, rock hammering and utilities cut overs)
- demolition of road pavement, traffic medians, kerbs and other road furniture
- compacting the ground, asphaltting and road resurfacing
- adjusting traffic signals and lane configurations ahead of major traffic changes

Iron Cove (close to Victoria Road):

- utilities and drainage work (trenching, rock hammering and utilities cut overs)
- demolition of pavement between Byrnes Street and Iron Cove Bridge
- road resurfacing at the intersection of multiple streets with Victoria Road
- adjusting traffic signals ahead of major traffic changes

All of these activities will involve high noise and our mitigation measures will include:

- using non-tonal reversing beepers on all machinery
- turning off equipment and vehicles when not in use or required
- directing noise and light generating equipment away from homes where possible
- installing noise blankets around our temporary work areas
- applying regular respite where required.

Contact us

If you have any enquiries or complaints about this work:

Ph: 1800 660 248

info@rozelleinterchange.com.au

We are now following the NSW Health 'social distancing' guidelines and the **Community Information Centre is closed until we're able to reopen.**

Subscribe to weekly email

updates regarding work in your area by emailing

info@rozelleinterchange.com.au

We speak your language



Need an interpreter?
Call the Translating and Interpreting Service on **131 450**

Construction work over Easter

Above ground construction work will cease across the project from **Friday 10 April** and will resume **Tuesday 14 April 2020**.

Tunnelling activities will continue 24 hours per day over Easter. This will include truck movements and workers accessing the tunnel sites.

The Rozelle Interchange project team wishes you a safe and happy Easter break.

Notification No 96

Changes to connectivity in Iron Cove

In April, the connectivity to Iron Cove will be changed with **both permanent and long-term road closures**, bus stop relocations and associated cyclist and pedestrian detours. These are required so we can build new westbound Victoria Road traffic lanes.

From 7 April there will be three key changes:

- **Clubb Street** will be **permanently closed** at Victoria Road. There will be no access to or from Victoria Road via Clubb Street for motorists and pedestrians
- **The Terry Street signalised pedestrian crossing** will be **closed for up to three years**. Existing crossings include the pathway beneath the Iron Cove Bridge and the Wellington Street intersection
- **Westbound Victoria Road shared path** will be **closed** between Springside and Toelle streets **for up to 18 months**. A temporary path will be available for pedestrians behind the construction site.

A **temporary closure** of **Callan Street** at Victoria Road was implemented on **23 March**.

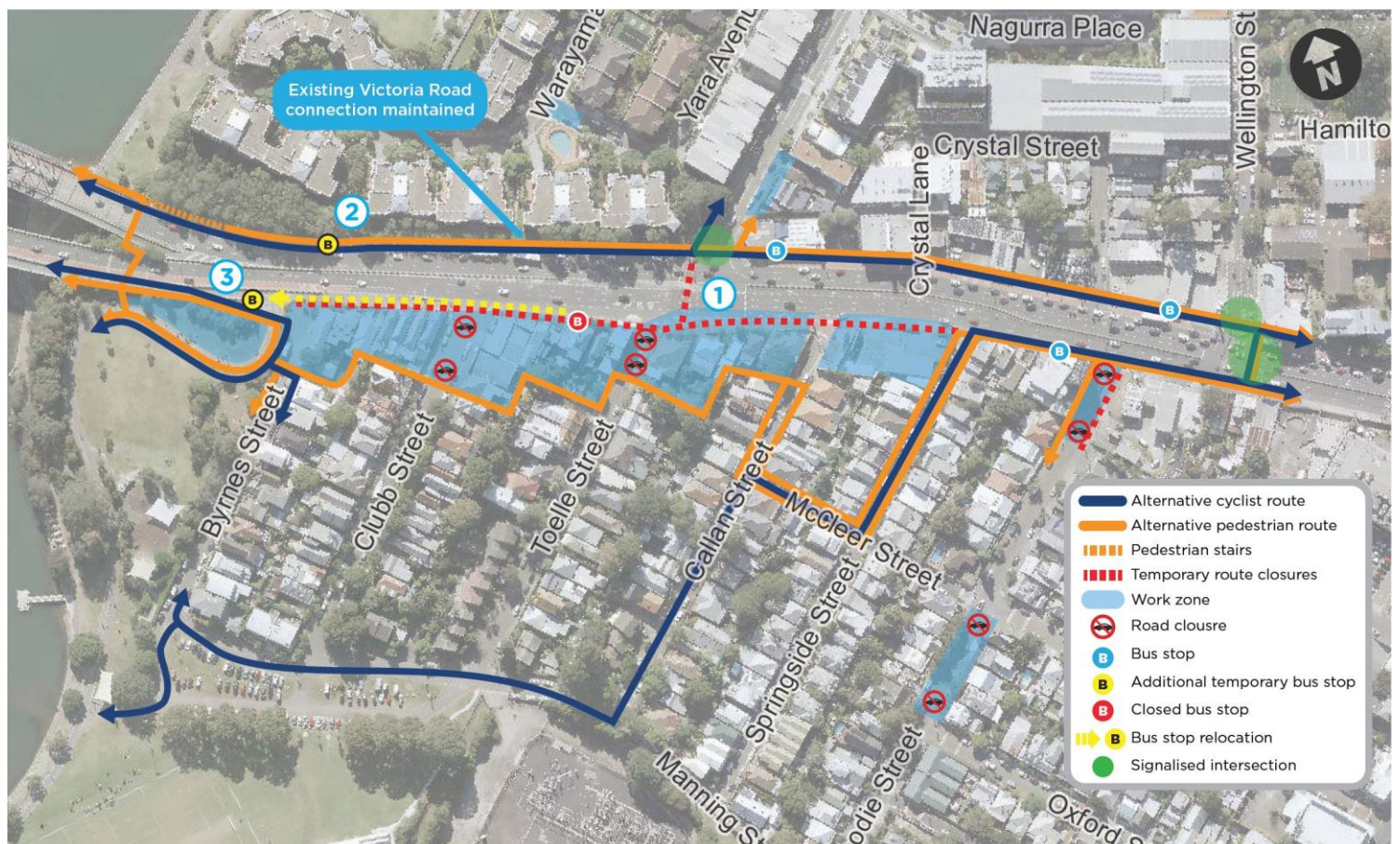
Other changes from 21 April:


- **Callan Street** will **open** and **Toelle Street** will be **temporarily closed** at Victoria Road for up to 12 months. Once Toelle Street is reopened, Callan Street will close again for up to five months
- **The remaining westbound Victoria Road shared path** from Toelle to Byrnes streets will be **closed for up to 18 months**. A temporary path will be available for pedestrians behind the construction site
- **The westbound bus stop near Toelle Street** (ID 203925) will be **relocated** further west just before the Iron Cove Bridge. An **additional city bound** stop will be opened on the opposite side of Victoria Road.

! The above changes are in addition to existing road closures and detours currently in place for the Balmain sewer relocation work. Changes include the closure of **Moodie Street** for up to six months at the northern end and three months at the southern end, and **Yarra Avenue and Terry Street** for four months. Please follow signage and allow extra time for your journey.

We understand that this will be a significant change for pedestrians, cyclists and motorists and a factsheet has been developed which provides further information. The fact sheet has been letterboxed and can also be found on the WestConnex website in the Rozelle Interchange document library.



The map below illustrates access routes for cyclists and pedestrians once all changes are implemented.



New and ongoing activities for the month		
Location	What's involved	Day/ night work
Victoria Road inside construction sites between Callan and Byrnes streets	<p>Preliminary work will progress to build the new westbound Victoria Road traffic lanes, and access ramp to the future tunnel entry and exit portals to be situated in the middle of Victoria Road. This work involves rock hammering, piling, compaction work and construction of temporary and permanent support walls and structures.</p> <p>! These activities create high noise as we hammer into rock and need to shake the piling rig free of material. You may also notice some vibrations from the compaction work. High noise work will be carried out between 8am and 6pm Monday to Friday, 8am to 1pm Saturday, with regular respite periods.</p> <p>Other associated preliminary work includes drainage and water adjustment work. This involves noisy work such as cutting through road pavement, trenching and reinstating work areas.</p> <p>Several important temporary and permanent road closures and access changes will be implemented in April. These changes are explained in greater detail on page 2.</p>	Day & night work
Victoria Road at Byrnes Street and the Iron Cove Bridge	<p>We're building a temporary westbound bus bay and realigning the surrounding shared path on Victoria Road adjacent to Byrnes Street. This work involves removal of existing pavement and barriers on the shared user path at Iron Cove Bridge and the Bay Run. Access will be maintained throughout the work with traffic control in place.</p> <p>We're also installing new drainage pipes and pits at Byrnes Street. Work involves road sawing and hammering and is expected to generate high noise.</p>	Day & night work
Toelle, Callan and Springside streets	<p>Work to install new street lighting and power poles will commence within our sites and local streets between Byrnes and Springside streets to replace the current streetlights along Victoria Road. Some tree trimming will be required as part of this work.</p> <p> Power outages are associated with this work. Further information about any planned outages will be provided once they are confirmed.</p>	Day & night work
Springside Street	<p>The installation of ground monitoring equipment will require us to return to each location twice. Initially to investigate the location of utilities in the ground and then to install the monitoring equipment. This work is generally low impact and involves using a drill rig mounted on the back of a truck to bore into the ground, install the equipment and reinstate the work area.</p>	Day work
Victoria Road (Drummoyne)	<p>We'll be starting work to install Intelligent Transport Systems on Victoria Road in Drummoyne, east of the Iron Cove Bridge. ITS include variable message signs (VMS), traffic signals systems, Closed Circuit Televisions (CCTV) and speed cameras. These systems will be installed to monitor and improve traffic flows, provide updated traffic information to motorists and enhance motorist safety. The first piece of work involves investigation work to identify the location of underground services. We'll be required to return to these locations in the coming months to install the physical infrastructure.</p>	Day & night work
Ongoing major activities		
Balmain sewer relocation work on Yara Avenue, Callan, Springside, Moodie and Terry streets	<p>Excavation and long-term street closures for the Balmain sewer relocation continue in April. We'll keep you updated on the progress of this work.</p>	Day work
Victoria Road between the Iron Cove Bridge and Terry Street	<p>Installation of new drainage pipes and pits at Terry Street continues. Work involves road sawing and hammering and is expected to generate high noise.</p>	Day & night work


April night work dates in Iron Cove

Monday	Tuesday	Wednesday	Thursday	Friday	Saturday	Sunday
30	31	April				
		1	2	3	4	5
6	7	8	9	10	11	12
13	14	15	16	17	18	19
20	21	22	23	24	25	26
27	28	29	30			

Noisy work nights 
Contingency nights 

We're able to carry out three nights of noisy work per week, with no more than two consecutive nights of work.

Night work dates are subject to change due to weather, site conditions and outages from utility providers


 Please provide us with your email address so we can let you know when night work is cancelled and which contingency nights will be used that week

To reiterate, upcoming traffic, pedestrian and cyclist changes

Upcoming long-term and permanent road closures



- Toelle Street** will be closed at Victoria Road for up to 12 months
- Clubb Street** will be permanently closed for construction at Victoria Road, creating a cul-de-sac
- Terry Street** outbound traffic lanes will be closed between Victoria Road and Nagurra Place for four months.

Ongoing long-term road closures

- Callan Street** will remain closed between McCleer Street and Victoria Road for up to four weeks
- Moodie Street** and the eastern footpath to McCleer Street will remain closed at Victoria Road for six months
- Yara Avenue** and the westbound footpath will remain closed up to Warayama Place for four months.

Upcoming long-term pedestrian and cyclist changes





- The westbound footpath on Victoria Road**, between Springside and Toelle streets, will be closed from 7 April for 18 months. The remaining footpath between Toelle and Byrnes streets will be closed from 21 April for 18 months
- The Terry Street signalised pedestrian crossing** will be closed from 7 April for up to three years.

We'll notify you via the weekly email update of any short-term changes.

Locations of work in April



New and ongoing activities for the month		
Location	What's involved	Day/ night work
Victoria Road, within our sites and on Victoria Road	<p>We'll continue to establish and prepare our sites on Victoria Road between Lilyfield Road and Quirk Street for the next stage of construction. This work involves the use of vacuum trucks, rock hammers and piling rigs which may generate high noise and some vibration. Our activities in April include:</p> <ul style="list-style-type: none"> - demolition of buildings and structures, concrete and road pavement and medians and levelling of the sites - construction of piling pads and piling work to build retaining walls and stabilise the ground - utility work to install services and pits and connect into new services being installed on Lilyfield Road and Quirk and Hornsey streets. <p> Removal of the Victoria Road overhead bridge and the access ramp to ANZAC Bridge shared user path continues. This work will generate high noise and involves the use of concrete saws and excavators with hammer attachments. Early investigation work will be done on the Beatrice Bush Bridge in preparation for removal later in the year.</p> <p> Utility work to install new electricity, water and gas services on Victoria Road will be ongoing for the next few months. This work will mainly be done at night and generates high noise as we remove the existing road surface and excavate new trenches to install new services.</p>	Day & night work
Gordon Street and Lilyfield Road intersection	<p>Work to install new power is planned inside the electrical pit on Gordon Street at Lilyfield Road. Testing and investigation of the network is required to inform the design. This is expected to be done towards the end of April and may require outages. Further information about any planned outages will be provided once they are confirmed.</p> <p>Work is expected to begin towards the end of the month to relocate overhead powerlines underground. Initial potholing and investigation work will be done to locate existing services and confirm the new alignment. Following this, new underground cables will be installed across Lilyfield Road and along the footpath. This work also involves the removal of existing power poles on Gordon Street and Lilyfield Road and installation of a new pole on Gordon Street.</p>	Day & night work
Quirk and Hornsey streets	<p>While most work on Hornsey Street is contained within our site, some utility work is required outside the compound to install new services and pits. Work on Quirk Street continues to install a new water main and telecommunication, electricity and gas services. We'll also be excavating, piling and filling the retaining wall. This work involves the use of vacuum trucks, rock hammers, piling rig and road saws. Part of the traffic median may be removed to facilitate this work.</p> <p>Temporary changes to on-street parking are required to facilitate this work. We'll notify you in advance when these parking spaces are planned to be removed.</p>	Day & night work
Lilyfield Road between Gordon Street and Victoria Road	<p>Installation of a new sewer line and service pits between Gordon Street and Victoria Road begins in April and is expected to take four to six weeks to complete. Firstly, we'll be potholing to identify existing services. Following this we'll start excavating a new service trench and installing the new pipes starting at Gordon Street and gradually moving along Lilyfield Road towards Victoria Road where we'll connect into an existing network within our site.</p> <p>This work mainly takes place during the day, generates high noise and requires staged temporary removal of on-street parking. Approximately 8-10 parking spaces at a time on each side of the street are required to allow us to establish a temporary work site and allow room for traffic to move safely around the work area. Access to driveways is maintained at all times and the work area will be reduced wherever possible to minimise the amount of on-street parking removed at any one time. Please let us know as soon as possible if you have any specific parking requirements (e.g. mobility restrictions, scheduled deliveries, moving home etc).</p> <p>Other utility work to install new water, telecommunication, electricity and gas services and pits near to Victoria Road continues in April. A temporary site compound will be established in the eastbound parking and traffic lanes at the Victoria Road end which</p>	Day & night work

	requires the removal of 12 on-street parking spaces on both sides of Lilyfield road. This compound will remain in place for approximately four weeks and will allow us to work within this area during the day. Two-way vehicle traffic will be maintained in the eastbound traffic and parking lanes. Traffic control will be in place to assist motorists, pedestrians and cyclists through these changes.	
Other work on Lilyfield Road	Demolition of the Desane building and car park structure continues and is expected to be completed in April. This work generates high noise and involves using excavators with hammer attachments. Short term closures of the footpath and part of the westbound lane are required to create a safety exclusion zone around our work area. This requires temporary removal of some on-street parking and stop-slow traffic control will be in place.	Day & night work
Inside the Rozelle Rail Yards	<p>There are multiple activities happening at each of the tunnel portal sites inside the Rozelle Rail Yards. We understand this work is noisy, so we've provided greater detail below on what's required at each location.</p> <p>M4 East and Iron Cove Link tunnel portals: Bored piling continues. Firstly, metal casing is drilled into the ground. The dirt within the casing is removed before concrete is poured into the casing. The process of removing the dirt from the casing via the piling rig can be noisy as the head of the piling rig spins to release the material.</p> <p>We'll also start to trim the piles using jackhammers. This can be noisy work as we break the weak concrete above the cut-off line leaving just the sound concrete below.</p> <p>Construction of the first section of the tunnel roof will commence with the first concrete pour planned mid-month. This can be noisy work as the concrete is vibrated to ensure compaction is achieved.</p> <p>Future Western Harbour Tunnel and Beaches Link tunnel portals: Hammering of rock and excavation continues. This is noisy work, involving the use of up to 50 tonne excavators. Firstly, we hammer the ground before transporting the material off-site.</p> <p>Construction of the diaphragm wall (D-wall) will commence. The D-wall is a continuous wall constructed in the ground to support deep excavation. This can be noisy work as we excavate the rock to create the trench which we'll later fill with concrete.</p> <p>New M5 to City West Link tunnel portals: We'll install canopy tubes and rock bolts, which are used as excavation support during tunnel construction. This can be noisy work as we drill into the rock face. Hammering of rock and excavation will continue, as well as concrete work to pour sections of the base slab. We'll also commence work on the columns and roof.</p> <p>High noise activities are carried out between 8am and 6pm Monday to Friday, and 8am to 1pm on Saturdays, with regular respite periods in between.</p> <p>Further information can be found in our fact sheet titled <i>Construction of the tunnel portals</i> which is available on the WestConnex website in the Rozelle Interchange document library.</p> <p>Construction of temporary access roads continues in April within the rail yards site. We'll be excavating, piling and installing precast concrete and retaining wall fill for:</p> <ul style="list-style-type: none"> - an Eastern Temporary Access Road (ETAR): vehicle ramp and footpath connecting Victoria Road to the ANZAC Bridge and; - a Western Temporary Access Road (WTAR): vehicle ramp and footpath connecting City West Link to Victoria Road. <p>These temporary roads will safely divert left-turning vehicles, pedestrians and cyclists around the existing intersection at Victoria Road and The Crescent which becomes our worksite. Permanent removal of some on-street parking spaces on Lilyfield Road is required to connect the WTAR to Victoria Road. We'll send out a fact sheet shortly with further detail and notify you in advance of parking spaces to be removed.</p>	Day work
Local roads	We'll be installing ground monitoring equipment on Balmain and Lilyfield roads, and Alfred, Justin, Maida, Fred, Ellen, Hancock, National, Percival streets, Easton Park and Stimson Reserve. We'll return to each location twice. First we investigate the location of utilities in the ground (one day to complete) and return to install the monitoring equipment (up to one week). We'll notify nearby residents in advance of monitoring installation work.	Day work

April night work dates in Rozelle and Lilyfield

Monday	Tuesday	Wednesday	Thursday	Friday	Saturday	Sunday
30	31	April				
		1	2	3	4	5
6	7	8	9	10	11	12
13	14	15	16	17	18	19
20	21	22	23	24	25	26
27	28	29	30			

Noisy work nights
Contingency nights

We're able to carry out three nights of noisy work per week, with no more than two consecutive nights of work.

Night work dates are subject to change due to weather, site conditions and outages from utility providers



Please provide us with your email address so we can let you know when night work is cancelled and which contingency nights will be used that week

Upcoming traffic, pedestrian and bus stop changes



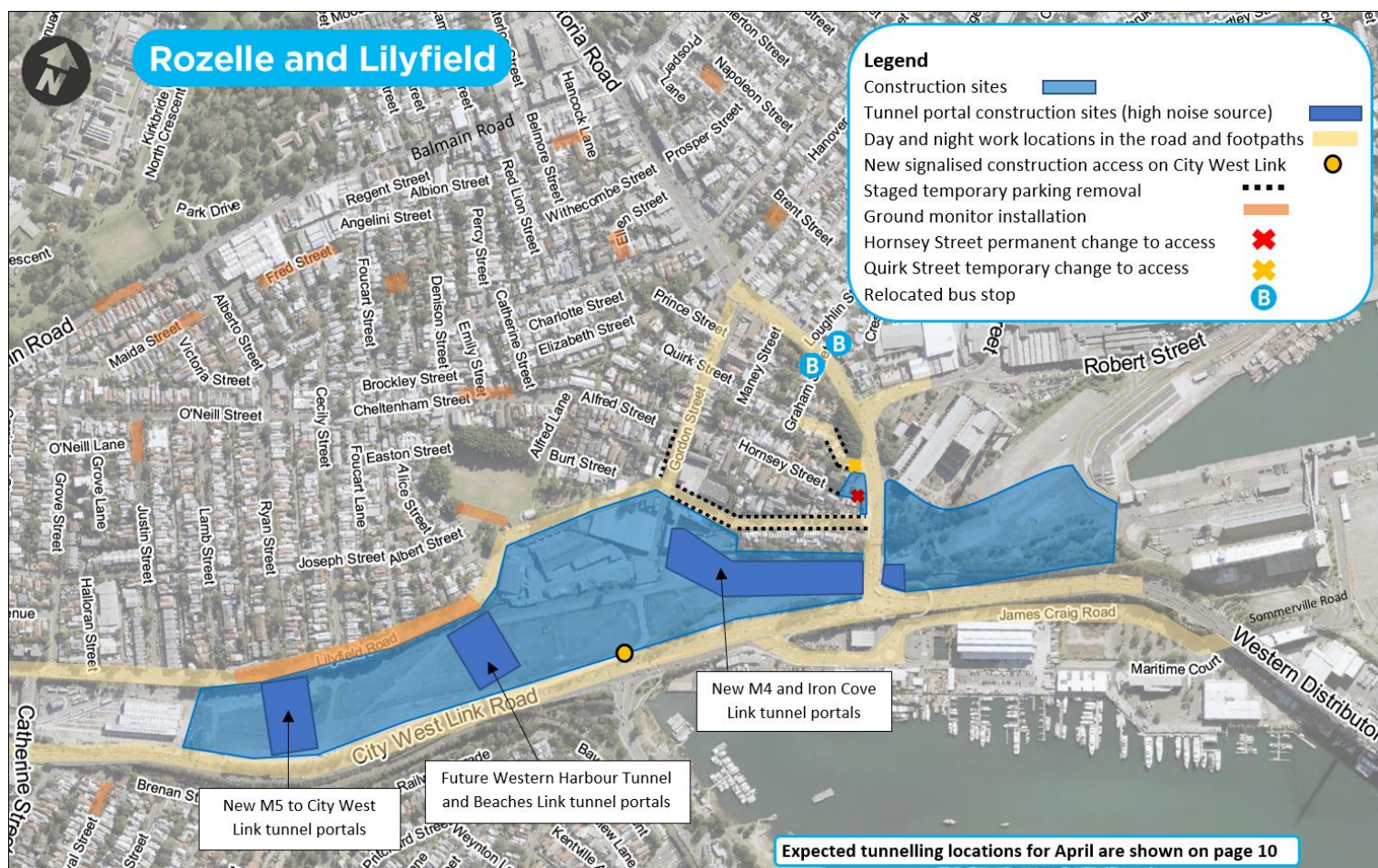
Quirk Street will be **closed** at Victoria Road for **up to three weeks**. Temporary changes to on-street parking is required. We'll notify you in advance when these parking spaces are planned for temporary removal. Please let us know if you have specific parking requirements (e.g. mobility restrictions, scheduled deliveries, renovations or moving house etc).

Hornsey Street was permanently closed in March.



Pedestrian access to Victoria Road from Hornsey will be **closed from mid April until late 2020** to facilitate construction of the cul-de-sac and new bus bay on Victoria Road.

Locations of work in April



New and ongoing activities for the month		
Location	What's involved	Day/ night work
James Craig Road	<p>Work continues in April to install new stormwater drainage and reconfigure the intersection of James Craig Road and The Crescent. This work includes:</p> <ul style="list-style-type: none"> - investigation and identification of existing services - demolition and removal of the existing medians, pedestrian islands, footpath and kerb - excavation and installation of new drainage pipes, service conduits and pits, and traffic control signal cabinets. <p>Utility work continues on James Craig Road to excavate and install new pits and services. Work locations continue to move along the road and temporary changes to vehicle and pedestrian movements and parking are required. Please watch for signage and ask our traffic controllers on site if you have any questions.</p> <p>Geotechnical and environmental investigations using drilling rigs on the embankment between Victoria Road and James Craig Road.</p>	Day & night work
City West Link and The Crescent (including Buruwan Park)	<p>We'll continue major construction work to widen The Crescent and build the new intersection with City West Link within Buruwan Park. Work to build the pedestrian and cyclist ramp and other structures continues. Activities in April include:</p> <ul style="list-style-type: none"> - establishing new site access points on The Crescent and construction of temporary and permanent road pavement - adjustments to traffic signals, lane configurations, medians, line marking and street lighting - piling and excavation work - investigation and installation of utility services and drainage pipes and pits - removal of existing traffic medians and adjustments to pedestrian islands. <p>We'll be installing monitoring points within the Light Rail corridor. This work will be done at night and may involve the use of rattle guns which may be noisy.</p>	Day & night work
Whites Creek Link (Railway Parade and Brenan Street)	<p>We'll continue to establish our site and begin geotechnical investigations and utility work to confirm ground conditions and locate existing underground services. We'll also be building temporary site access over Whites Creek and a piling pad in preparation for bridge construction. A piling rig and other equipment or materials need to be delivered at night due to the size and traffic control to get it into Brenan Street.</p> <p>Construction vehicles for this work will enter via Catherine and Brenan streets. This means that there will be an increase of traffic control and construction vehicles on these streets while we're working. For more information please refer to our Whites Creek Link fact sheet available on the WestConnex website in the Rozelle Interchange document library.</p>	Day & night work
Chapman Road and Johnston Street	<p>We'll continue installing new services along Chapman Road and Johnston Street. This work includes removing a small amount of vegetation on Johnston Street and excavation at the rock face between Johnston Street and Bayview Crescent to install a new water main. Adjustments to current lane configuration and existing medians will be carried out.</p>	Day & night work
Bayview Crescent and Pritchard Street	<p>Installation of a new water main on Bayview Crescent has been delayed pending additional approvals from the utility provider. Once these approvals are received we'll install a temporary water main and connections for residential properties before we begin to install a new permanent water main. As part of this work water outages are required. Further information about any planned outages will be provided once they are confirmed.</p> <p>We'll begin work on Pritchard Street to install new electrical services between Bayview Crescent and Breillat Street, pending approvals. Work is expected to begin towards the end of April and will involve the use of equipment which generates high noise including vacuum trucks, road saws and excavators with hammer attachments. A temporary work site will be established each day which will impact on-street parking. Further information about this work and the parking spaces required will be provided closer to the time.</p>	Day & night work

Jubilee Park	<p>In April we'll be testing utility signals within Jubilee Park to identify electrical underground cables. This work includes potholing and excavating to locate the cables and requires the use of a vacuum truck. The work will be positioned to avoid trees and vegetation and will take approximately two weeks to complete.</p> <p>A temporary work site will be established which remains in place overnight for the duration of the work. Safe access will be maintained for cyclists, pedestrians and park users at all times. Access to the work area will be via Chapman Road through the park. One on-street parking space will be removed during this period and a small timber ramp temporarily installed on the kerb to allow vehicles to enter the park. We'll have to return to this area in the following months to undertake further testing before we can carry out utility relocation work on The Crescent and Chapman Road.</p>	Day & night work
---------------------	--	------------------

April night work dates in Annandale

Monday	Tuesday	Wednesday	Thursday	Friday	Saturday	Sunday
30	31	April				
		1	2	3	4	5
6	7	8	9	10	11	12
13	14	15	16	17	18	19
20	21	22	23	24	25	26
27	28	29	30			

Noisy work nights

Contingency nights

We're able to carry out three nights of noisy work per week, with no more than two consecutive nights of work.

Night work dates are subject to change due to weather, site conditions and outages from utility providers

Please provide us with your email address so we can let you know when night work is cancelled and which contingency nights will be used that week

Upcoming traffic, bus stop and pedestrian changes



- The Crescent westbound lane closure:** The first left hand lane (lane closest to the footpath as you approach the intersection with City West Link) will be closed in April after the new site access gates are opened on City West Link.
- James Craig Road left turn lane closure:** The first left hand lane (lane closest to the footpath as you approach the intersection with City West Link) will **remain closed for approximately three months**.

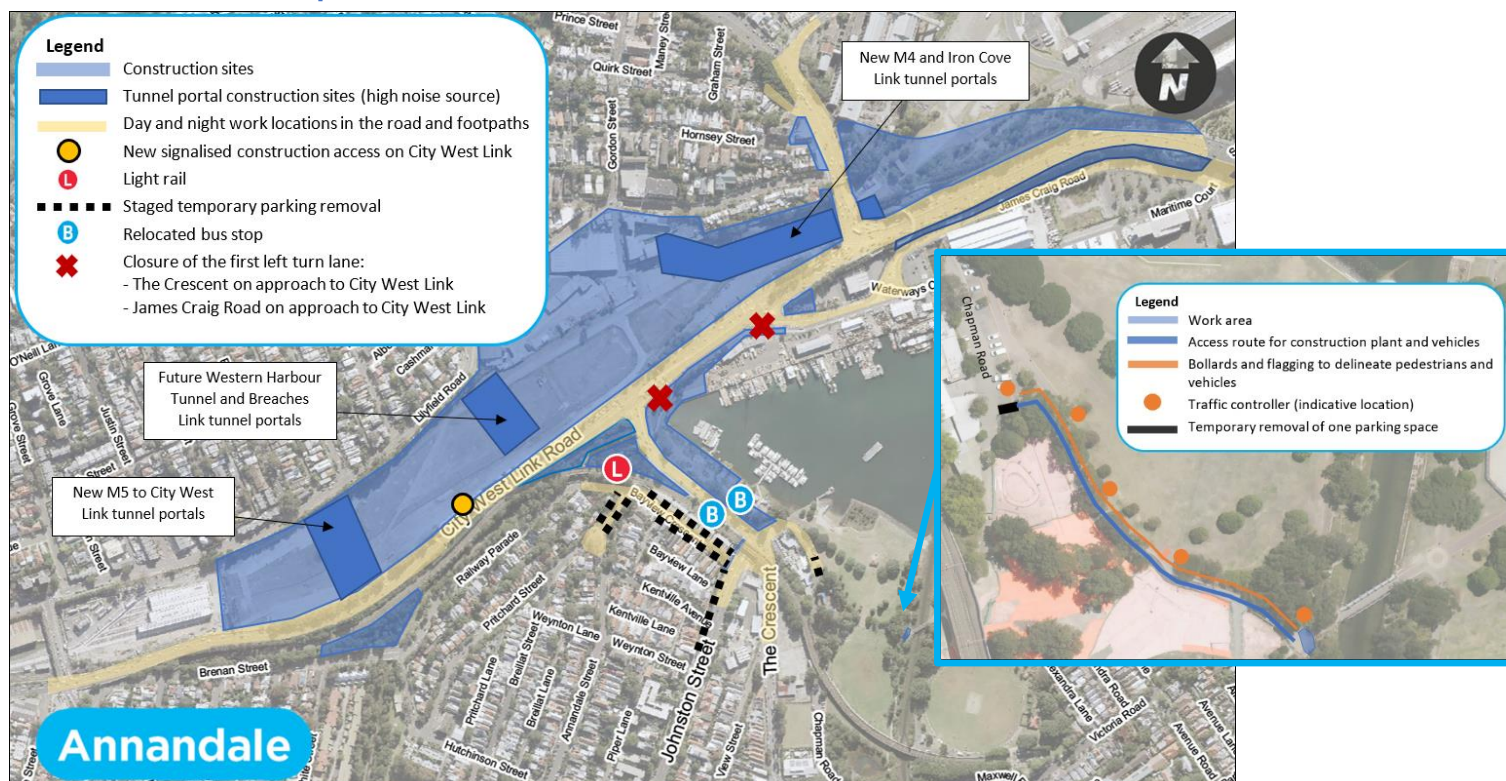


- The Crescent northbound stop (ID 203816) and southbound stop (ID203811) will remain closed until the end of June 2020.** Temporary bus stops are in place further south towards Johnston Street.





- The Crescent footpath closure:** Changes to current routes for pedestrians and cyclists are expected including closure of the southbound footpath between The Crescent and Chapman Road. Please follow signs and allow extra time for your journey.

Locations of work in April



Ongoing activities across all sites in April (day and night)

The table below lists common activities occurring across our work areas and sites. Daytime activities are undertaken during standard construction hours of **7am to 6pm Monday to Friday, and 8am to 6pm on Saturdays**.

Activity	Location	About	Potential impact
Site establishment and ongoing construction work 	Within our construction sites and work areas	<ul style="list-style-type: none"> installing site fencing, barriers and hoarding, retaining walls, internal haul roads, site offices and worker facilities constructing site access points piling, excavation and earthworks to build foundations for tunnel portals, bridges, buildings, roads and other structures building tunnel access ramps and water treatment plants drainage work tree clearing and vegetation removal demolition of existing buildings, kerbs and medians adjustment to traffic signals and streetlights asphalting and linemarking. 	<ul style="list-style-type: none"> high noise work (rock hammering and rattle guns) vibrations increased truck and light vehicle movements in/ out of sites changes to traffic and road conditions, bus stop relocations, removal of on-street parking, pedestrian and cyclist detours potential odour from asphalting dust.
Utility work (water, gas, power, communications and sewerage) 	Local roads and footpaths Service providers will give advance notice of any outages if they are required	<ul style="list-style-type: none"> establishing a temporary work site and investigating the ground to locate existing utilities saw cutting and digging trenches construction of utility launch and receiver pits installing new, relocating existing, and/ or disconnecting redundant utilities temporarily reinstating the ground using road plates and asphalt. 	<ul style="list-style-type: none"> high noise work (jack hammering and saw cutting) the work varies in duration temporary outages road closures, removal of on-street parking, bus stop relocations and pedestrian and cyclist detours dust.

Night work dates and locations

Night work occurs outside of standard construction hours to ensure the safety of workers, pedestrians and motorists, and to minimise impacts to traffic flow. **Night work will be required for the duration of the project and generally takes place between the hours of 8pm to 7am the following morning.** On this Project we're able to carry out three nights of noisy work per week with a maximum of 10 nights per 28-day cycle. Two nights can be consecutive with a one-night break provided before the third night.

We've included night work calendars and maps for each area on the following pages so you know which nights we're working and where. A work update is sent weekly via email providing more detail about scheduled work activities for the following week, work cancellations and any other relevant Project information.

Equipment used for night work may include, but is not limited to, road saws, rock hammers, excavators, lighting towers, generators, light vehicles, compaction equipment, vacuum trucks, hand tools and traffic control.

Night work that is not intrusive may occur outside of the dates, locations and times specified throughout and without notification. Some of the work may require traffic control and changes to routes/access.

Tunnelling update

We have four roadheader tunnelling machines in operation and expect two more machines to arrive in April. Tunnelling activities will continue to occur 24 hours a day, 7 days a week (including over Easter) with the expected tunnelling locations shown in the map below. Residents will be notified approximately two weeks prior to tunnelling beneath individual properties.

